



Edit.Geo.Mobile

“ Walking About TM ”

User Guide for PC online

1° March
2013

Introduction

Information and services provided by Walking About are available via online registration at www.walkingabout.info or by downloading the application directly onto your smartphone from PlayStore, AppStore or Walking About.

Registration is free and available to all. Registering allows the user to access all public channels on client and server. Users of Walking About will be able to communicate with other users as well as friends through the site or on-the-go with a smartphone.

Subscribing to a Theme Channel allows users to access material or webpages that talk about that particular channels topic and also puts them in contact with other users interested in the same thing.

Information will be seen as a POI (Point of Interest) on a google map. Added content on this map will be:

- ✓ The geographic correlation between an event or place indicated by a POI,
- ✓ You will be able to see context in two-dimensions
- ✓ The birth of data directly in its physical context, for example, the birth of a song at the place where inspiration for it was drawn from, or a painting of a horizon exactly from the point first seen by the artis.

The client-server structure allows for real time editing of a POI from a personal computer or on-the-spot when new information emerges. Walking About introduces a significant upgrade to your basic usage of a Google map mainly due to the geographically referenced Theme Channels.

The application allows for the locating of other users while they're on-the-go visible on the maps of the users topics of interest. The combination of detailed information on a place and of the people that are there at the moment opens up a multitude of services, especially for the ever growing potential of sensory and virtual reality available on smart phones.

1

Edit.Geo.Mobile s.r.l.
Via Timavo 34
00195 Roma
P.IVA/CF 10732951008

Fax 06 3700 175
Email
info@editgeomobile.com
Mobile 329.9713.998
www.editgeomobile.com



Edit.Geo.Mobile

“ Walking About TM ” User Guide for PC online

1° March
2013

Theme Channels can be private. In this case the Editor/Creator reserves the right to accept registration of its users under a set of established rules, like in a private club. If it's the case, tax included they can make payment of the registration at the end of a web generated user agreement. In a private channel users can have access to a social network with its other users, they'll be able to use geo-referenced hypertexts via their smart phones, kind of like a multimedia guide, and they'll be able to immediately see the location of their friends or colleagues in the same Channel.

.



Edit.Geo.Mobile

“ Walking About TM ” User Guide for PC online

1° March
2013

1. Registering on the website www.walkingabout.info

1.1. Accessing the website www.walkingabout.info

Entra nel sistema: Login... Password... Vai

[Registri](#) | [Recupero password](#) | [Downloads](#) | [Chi siamo](#)

"BETATEST thanks for comments" email a [Edit.Geo.Mobile@gmail.com](mailto>Edit.Geo.Mobile@gmail.com)

Home | Canali Commerciali | Canali Referenziati | Canali Tematici | Altre Applicazioni

Italia (Italy)

Mappa | Satellite | Rilievo

Mostra indicazioni

Diventa un utente registrato per...

- › Fondare un canale tematico e divenirne l'editore
- › Lavorare per un canale tematico
- › Leggere e portare con te testi e guide georeferenziate
- › Creare un canale tematico per il tuo divertimento
- › Realizzare e commercializzare servizi di assistenza sul territorio
- › Gestire servizi pubblici e privati
- › Creare e condividere il tuo diario di viaggio
- › Prendersi appuntamenti e incontrarsi per lavoro o con gli amici

1.2. Hitting the "Register" button

- Follow the procedure by inserting your information, be sure to include your active e-mail in order to activate the site's registration.

Entra nel sistema: Login... Password... Vai

[Registri](#) | [Recupero password](#) | [Downloads](#) | [Chi siamo](#)

"BETATEST thanks for comments" email a [Edit.Geo.Mobile@gmail.com](mailto>Edit.Geo.Mobile@gmail.com)

Home | Canali Commerciali | Canali Referenziati | Canali Tematici | Altre Applicazioni

› Manualistica

› Downloads

› Cosa si può fare con WA

› Chi siamo

› Utente

› Registrazione

› Recupero password

› Testimonials

› Prof. Carlo Zaccagnini

› Prof. Livio Triolo

› Comm. Mirella Stampa Barracco

› Dott. Luigi Londei

› Prof. Aldo Fanchiotti

Registrazione utente

Indirizzo di posta elettronica

mario.rossi@gmail.com

Il campo non puo'grare, essere vuoto

Password

Ripeti la password

Nome

Cognome

Registri

Registrazione

3

Edit.Geo.Mobile s.r.l.
Via Timavo 34
00195 Roma
P.IVA/CF 10732951008

Fax 06 3700 175
Email
info@editgeomobile.com
Mobile 329.9713.998
www.editgeomobile.com

1.3. Activating the registration

- Check the e-mail address provided upon registration for new mail.
- Select the e-mail from Walking About and click on the confirmation of registration link
- Click on save the changes in order to complete registration.

(NOTE: the command "save the changes" can be found at the bottom of the page "Update Profile". Here the user can upload an image, change a password and update their profile as they wish)

Once registration is complete the user will be able to access the Social Network "Walking About" by simply inserting their registered user-id and password.

(NOTE: If for some reason the registration can't be completed for example because the user was unable to check his or her email, the completion can be done in a timeframe of 48 hours simply by clicking on the confirmation of registration link provided in the e-mail. After 48 hours the user must start a new registration.

2. Home Page

The home page is made up of a map that offers a panoramic view of the contents the user has selected previously. These selections can be seen as icons: Points of Interest (POI) and Friend icons with the image chosen by that person at registration. The icons of friends that can be located walking about the world are those that are visible at the moment.

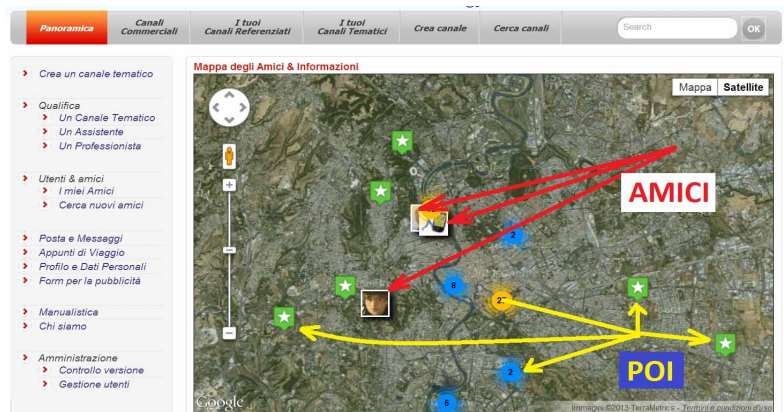
The first time one logs on to Walking About the panoramic map is empty and the list of "My Channels" contains only that person's personal channel that is created automatically at registration. The personal Channel is available only to its registered user therefore the owners notes, drafts of POI, memos and all other content is visible only to the user or anyone using the user's log in.



Edit.Geo.Mobile

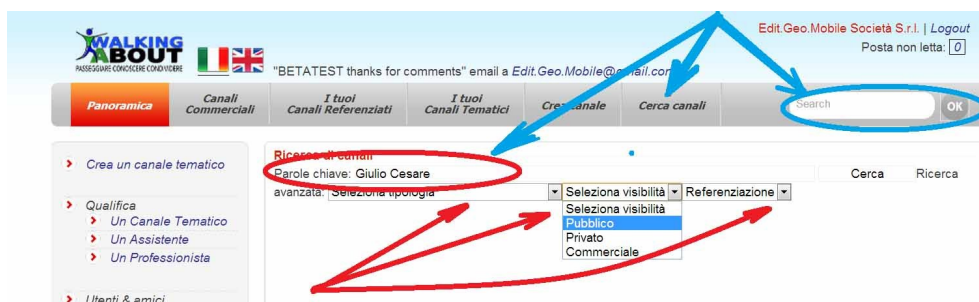
“ Walking About TM ” User Guide for PC online

1° March
2013



2.1. Searching for topics of interest.

A user can find information on things of interest by inserting keywords in the search box or through the "Search Channels" function which provides more detailed results



The results of the search are presented as a list of labels of the channels that talk about the topic of interest. The user can click on the detailed summary of the channel and subscribe. Any public Theme Channel automatically accepts subscribers, private ones instead may request information, disclaimers, user agreements, and payments in function of the policy established by the Editor (Creator) that is responsible for the channel. Usually the policy is described in the window that describes the reason and forms of use for the Theme Channel. it's recommended to be wary of Theme Channels that do not have clear terms of agreement and the signature of the Editor.

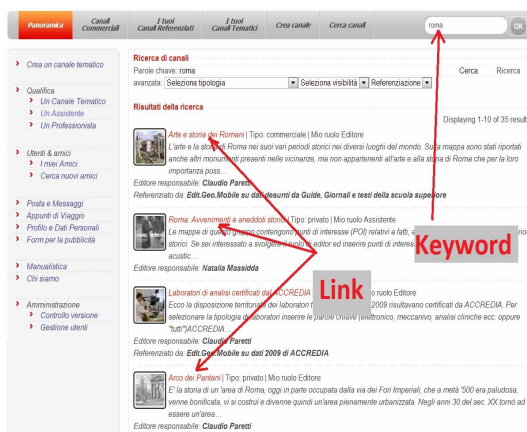


Edit.Geo.Mobile

" Walking About TM " User Guide for PC online

1° March
2013

Official Theme Channels are those in which the Editor has provided references about his own name/field of expertise (please refer to the procedures for qualifying a Theme Channel).



Using the "link" to the Theme Channels you can access the description of contents of the Channel, and as mentioned before, can include the rules set forth by the Channel's Editor in order to complete subscription (for example furnish credentials or complete an application). The Editor will spell out the procedure and will provide the tools in order to continue forth. For example, if an application is required, in the Channel's description, the Editor must provide an e-mail address to where this application can be sent.

2.2. Selecting the topics of interest and saving your favorites

The user will activate the subscription by clicking on the "click here" button that sends an automatic e-mail to the Editor (Creator) letting him know of the request. The Editor will respond with an answer via e-mail or with some other form of communication.



Edit.Geo.Mobile

“ Walking About TM ” User Guide for PC online

1° March
2013

The screenshot shows the 'Etruschi' channel page. At the top, there's a navigation bar with tabs: 'Panoramica', 'Canali Commerciali', 'I tuoi Canali Referenziati', 'I tuoi Canali Tematici', 'Crea canale', and 'Cerca canali'. A search bar is on the right. On the left, a sidebar menu lists various options like 'Crea un canale tematico', 'Qualifica', 'Utenti & amici', etc. The main content area features a light blue box with the text: 'Nuova adesione al canale. Non sei ancora iscritto a questo canale. Se vuoi iscriverti a questo canale [Clicca qui](#). Questo è un canale commerciale. Per l'adesione a questo è un canale viene richiesto un pagamento di 0.00€'. Below this, there's a 'Dettagli del canale Etruschi' section with a 'Visualizza...' button and a 'Descrizione' button. The channel details show 'Utenti iscritti: 4', 'Fondato il: 2012-03-21 09:53:14', and 'POI disponibili: 11'. A 'Iscrizione' button is visible. The channel description text is: 'Link sugli Etruschi Comune di Veio + Leonardo... I luoghi, le opere e la vita di un popolo misterioso e interessante, gli etruschi ancora oggi poco conosciuti, ma artefici di una civiltà capace di realizzare opere d'arte e di ingegneria raffinate e complesse. La civiltà prima della espansione. Prospera già prima della fondazione di Roma, la civiltà etrusca influenzò la civiltà romana e dette i primi Re alla Roma delle origini.'

After completing the subscription to the chosen Theme Channels , the Channel will show among the list of your favorites under "My Commercial Channels" or "My Official Channels" depending on the type of channel and whether it has been qualified or not as such.

3. Utilizing Theme Channels

NOTA: I canali tematici scelti e inseriti negli elenchi dei preferiti vengono a costituire la libreria di guide tematiche a disposizione dell'utente. Tali guide possono essere consultate mediante Smartphone e Tablet Android e iPhone utilizzando il client corredato di realtà aumentata o via web attraverso i comuni browser disponibili dai terminali di rete (PC, Smartphone, Tablet ecc.)

Nel presente paragrafo si tratta l'uso dei canali tematici da browser su web

Use one of the tabs on the grey menu to access your saved Theme Channels then click the Channels link to see its content and also to communicate with other users interested in the topic.

7

Edit.Geo.Mobile s.r.l.
Via Timavo 34
00195 Roma
P.IVA/CF 10732951008

Fax 06 3700 175
Email
info@editgeomobile.com
Mobile 329.9713.998
www.editgeomobile.com



Edit.Geo.Mobile

" Walking About TM " User Guide for PC online

1° March
2013

Walking About
ASSESSORATO CONCORSO CONDOTTIERE

Claudio Paretti | Logout
Posta non letta: 0

Panoramica Canali Commerciali I miei Canali Referenziati I miei Canali Tematici Crea canale Cerca canali Search OK

Qualificazione
Crea un Canale Qualificato
Diventa assistente
Iscriviti come Professionista

Utenti & amici
I miei Amici
Cerca nuovi amici

Posta e Messaggi
Appunti di Viaggio
Profilo e Dati Personali
Form per la pubblicità

Manualistica
Chi siamo

Lista dei miei canali Tematici

Displaying 1-10 of 89 result(s).

Acque termali | Tipo: privato | Mio ruolo Editore
I luoghi dove è possibile usufruire dei benefici delle acque termali. La cultura del "termalismo" ha antiche origini (Wikipedia) e una recente, ma diversa "rivisitazione" avvenuta a partire dal 1700. L'Italia per la sua natura vulcanica, per il ...
Editore responsabile: **Claudio Paretti**

Acquisti intelligenti a Roma | Tipo: commerciale | Mio ruolo Editore
Se ti iscriverai a questo canale tematico potrai utilizzare il tuo smartphone per trovare gli esercizi commerciali che offrono i prodotti commerciali al miglior prezzo. E se passerai dalle parti di un esercizio che ha ciò che cerchi il tuo cellulare...
Editore responsabile: **Claudio Paretti**

Agenzie di stampa | Tipo: privato | Mio ruolo Editore
Un giornale geo-referenziato. Giornalisti e freelance localizzati nei luoghi de...
Editore responsabile: **Claudio Paretti**

Amici del giaguaro | Tipo: commerciale | Mio ruolo Utente
Ripenso con tenerezza a quei poveri illusi che meno di un mese fa festeggiavano sguaiatamente la caduta di Silvio Berlusconi. Costoro, vittime incolpevoli di un sistema mediatico costruito ad arte, vengono volutamente fomentati contro un nemico ridicolo...

Appunti e consigli di viaggio | Tipo: privato | Mio ruolo Editore
E' un canale tematico aperto a tutti su cui ognuno può lasciare le proprie annotazioni su ciò che ha visto o apprezzato nei luoghi visitati. Gli utenti sono invitati ad inserire informazioni di validità generale riservandosi di creare un p...

Accesso ai Contenuti del Canale Tematico

- Tab over to the **"My Commercial Channels"** where you find the chosen commercial channel's summary
- Tab over to the **"My Qualified Channels"** where you'll find a list of your already selected chosen topics of interest created by field experts with proven credentials. These channels give the user the peace of mind that the information provided is from credible sources. (1)
- You can use the **"My Thematic Channels"** tab to access your previously chosen Channels in which you are active making the most of your interest in the topic.
- Here you will find the **"Search Channels"** tab that allow you to look up channels by topics of interest (2).
- This is where you will also find the **"Create Channel"** tab that will give you access to the tools needed in order to create one's own Theme Channel (3).

8

Edit.Geo.Mobile s.r.l.
Via Timavo 34
00195 Roma
P.IVA/CF 10732951008

Fax 06 3700 175
Email
info@editgeomobile.com
Mobile 329.9713.998
www.editgeomobile.com



Edit.Geo.Mobile

“ Walking About TM ” User Guide for PC online

1° March
2013

3.1. Accessing the Contents

Use one of the menus on the side bar in order to see the Theme Channels description and the contents of its map:

The screenshot shows the 'Contenuti del Canale Tematico' page for 'Arte e storia dei Romani'. The sidebar on the left contains navigation links such as 'Crea in canale tematico', 'Qualifica', 'Utenti & amici', 'Posta e Messaggi', 'Manualistica', and 'Amministrazione'. The main content area features a map titled 'Mapa punti di interesse' and a text description of the channel's focus on Roman art and history. The right sidebar displays 'Informazioni e notizie georeferenziate', including 'POI disponibili: 127' and 'Il tuo ruolo: Editore'. A green box with the text 'Comunicazione con gli iscritti, interessati allo stesso argomento' is overlaid on the page, with red arrows pointing to the 'Mapa punti di interesse' and the channel description text.

3.2. Theme Channels and their content

- The summary of the topic that typically contains:
 - ✓ The topic discussed and the channels reason for being.
 - ✓ Disciplinary code for behavior set forth by the Editor and managed by the Channel's moderator or Assistant.
 - ✓ Eventual rules that should be followed in order to have access to the information provided by the Channel.
 - ✓ If the case eventual costs for subscription to the Channel and its data.
 - ✓ Eventual rules that should be followed in order to have access to the Channel's user Social Network. Content is decided upon solely and freely by the Channels Editor therefore it's possible that content shown is completely different from what is indicated in the summary.
- Qualification material or credentials of the Channel's Editor (Present only in Official Channels)
- Number of uploaded POI
- Number of users
- The name of the Editor responsible for the Channel and in the case of an Official Channel, the Editors Resume/CV and public testimonials.
- Ones role in the Channel

3.3. The Points of Interest map (POI)

- The POI of the Theme Maps, one of two methods of communication between users, make up the main form of communication in Channels due to its nature:
 - ✓ Permanent and accessible 24 hours from any device online.
 - ✓ Contextual
 - ✓ Dynamic

9

Edit.Geo.Mobile s.r.l.
Via Timavo 34
00195 Roma
P.IVA/CF 10732951008

Fax 06 3700 175
Email
info@editgeomobile.com
Mobile 329.9713.998
www.editgeomobile.com



Edit.Geo.Mobile

“ Walking About TM ” User Guide for PC online

1° March
2013

- ✓ Full of sensorial, multimedia and conceptual content that combined with the use of a smartphone bring an almost alive form of information via geodesic maps.



3.4. The Wall

This is where users of the Theme Channels share information, make comments and have discussions or branch out through the POI on the map.

3.5. List of Subscribers

The list of subscribers is made up of the user name of those who have requested to join that channel. The list is accompanied by the persons "business card" that is made up from the information provided on the user profile.

Clicking on "label" for those listed will establish contact with that other user also interested in the topic discussed in the Channel.



Edit.Geo.Mobile

“ Walking About TM ” User Guide for PC online

1° March
2013

- > Crea un canale tematico
- > Qualifica
 - > Un Canale Tematico
 - > Un Assistente
 - > Un Professionista
- > Utenti & amici
 - > I miei Amici
 - > Cerca nuovi amici
- > Posta e Messaggi
 - > Appunti di Viaggio
 - > Profilo e Dati Personali
 - > Form per la pubblicità
- > Manualistica
 - > Chi siamo
- > Amministrazione
 - > Controllo versione
 - > Gestione utenti

Iscritti al canale Arte e storia dei Romani

| | Visualizza... | Modifica... | Operazioni... |
|--|--|-------------|---------------|
| | Natalia Massidda Invia Messaggio | | Redattore |
| | Frattasky Frattasky Invia Messaggio | | Redattore |
| | tre walker Invia Messaggio | | Redattore |
| | Emilia Cento Invia Messaggio | | Redattore |
| | Stefano Pagnottelli Invia Messaggio | | Assistente |
| | Emilia Cento Invia Messaggio | | Utente |
| | Lis'Art Tatum Invia Messaggio | | Utente |

3.6. List of Points of Interest

The list of Points of Interest lets users have access to territorial information using ordered lists of POI and using search techniques of the logical/linguistic and contextual type.

Panoramica

- I tuoi Canali Commerciali
- I tuoi Canali Referenziati
- I tuoi Canali Tematici
- Crea canale
- Cerca canali

Search OK

Lista dei POI del canale Arte e storia dei Romani

Displaying 31-40 of 127 results.

| | Visualizza... | Modifica... | Operazioni... |
|--|--|-------------|---------------|
| | Fontana dei Diosfori (lat:41.899120, lon:12.486601) Inserito il 2010-05-04 00:38:15 da Claudio Paretti | | |
| | Fontana dei Tritoni (lat:41.888567, lon:12.481217) Inserito il 2012-11-20 09:05:25 da emanuela monaldi | | |
| | Fontana dell'Acqua Paola (lat:41.888916, lon:12.484290) Inserito il 2010-08-23 00:17:01 da Claudio Paretti | | |
| | Fontana di Trevi (lat:41.900799, lon:12.483354) Inserito il 2010-05-04 00:35:10 da Claudio Paretti | | |
| | Foro di Traiano (lat:41.895696, lon:12.484557) Inserito il 2010-02-11 18:17:13 da Claudio Paretti | | |
| | Foro Piazza Argentina (lat:41.895425, lon:12.476832) Inserito il 2010-08-21 23:19:16 da Claudio Paretti | | |
| | Giardino degli Aranci (lat:41.882958, lon:12.478481) Inserito il 2010-08-23 00:20:25 da Claudio Paretti | | |



4. The tools to manage a Theme Channel

4.1. Creating a Theme Channel

When you hit the button "Create Channel" the window shown below will appear. Once saved this window will give place to a shell of content and services that will then become a Theme Channel.

A Theme Channel is shown as a template containing multimedia information visible to all subscribers in the form a map in which POI are then placed.

Clicking on a POI will then show you pages that describe the content relative to that place that the Editor and his moderators intend to detail. Content is hyperlinked to websites that are organized in a multimedial way.

Only those authorized by the Editor can make changes, modify and edit contents.

NOTE: There are no limits to the amount of moderators and assistants to a channel. The Editor can make all users moderator and in this case there wouldn't be any "users" (those who can access information but not create any new information (POI)) or "assistants" who have administrative rights on the Channel ¹

¹ Admin rights given to the Assistants by the Editor are important especially for the Editors of the Official Channels. These privileges, needed to manage the channels operations, can be used to specify or publicly show who runs the administration of the information, and to highlight public organizations or even those private, in terms of the law that these organizations must adhere to; obligatory in order to become an Official Channel (Rule to follow in order to be a Qualifiable Official Theme Channel).

12

The Theme Channel has a menu to see content and another menu to edit content.

You can find the Create a Theme Channel link in the menu that appears on the first column of the left side bar of the page "www.walkingabout.info/index.php?r=pano".

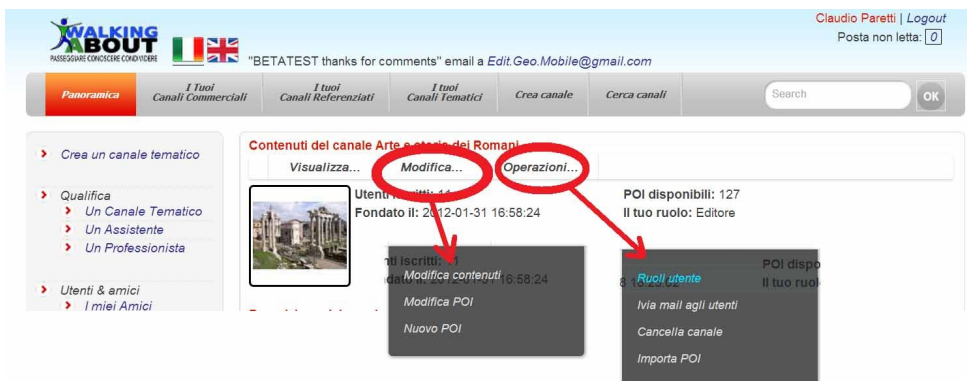
New channels once saved immediately appear in the "My Channels" tab. They can be modified and pumped up with content via the "Modify" button.

4.2. Working on your Theme Channel

Once the Theme Channel has been established a new page will appear with three menus that will help you add content: "Visualize", "Modify" and "Operations".

"Visualize" is used to see what your content will look like as you're working on it and to see what others will see when your addition is complete.

The menus "Modify" and "Operations" are used to actually add the new content to the Channel. By selecting the subjects on these menus you can modify the content of POI and establish methods of communication with the subscribers. The menu "Modify" and "Operations" are available to the Editor and his moderators.

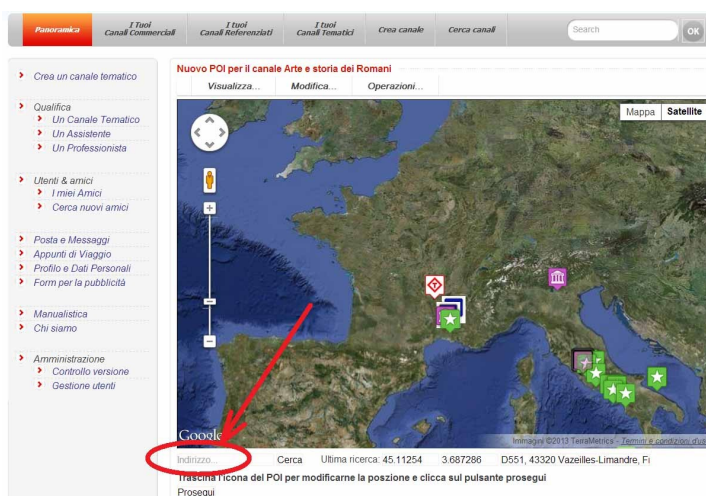




4.3. Creating a new POI²

This procedure allows you to create a new Point of Interest (POI) from your computer, on the Theme Map of the Theme Channel in progress.

At the start of the process a new map is created with a fake POI in the center (white with a red border). This fake POI can be dragged with the mouse to a real desired position or you can move it by entering the address of an actual destination or the name of an object (monument, theatre, fountain, park etc...) of interest. (se onto a google)



When the POI is positioned accordingly hit Continue, a new window will appear where you can enter information relative to the POI.

NOTE: *At this point the POI has not yet been saved on the map. This will happen only after having entered information on the POI in the window and then hitting the "save content" button. If you abandon the procedure before saving the content the work done so far will be lost. It could be handy to divide the work in two phases: the first where you establish the POI by naming it and saving it as a work in progress POI, the second phase in which you modify the POI itself by inserting the information in parts and saving them one at a time.*

2 NOTE: the editing of the POI is reserved for the Editor, the moderators and the Assistants. *It is seen that user roles in the Channel are assigned by the Editor without number limitations, for which in theory, the Editor can make all users moderators allowing them to upload their own POI making the Channel one where everyone can place their geographical knowledge on the maps of the Theme Channel.*

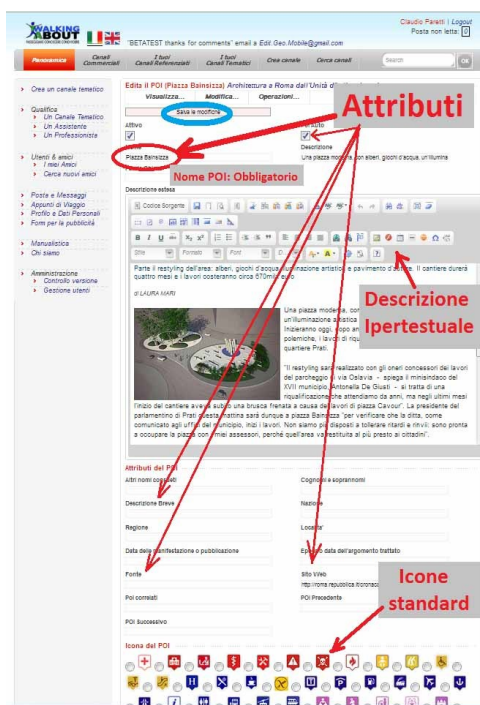


4.3.1. Editing a POI

The command "Edit POI" opens a window where one can add information relative to

- the characteristics that produce a search method, presentation and furnishing of information,
- the descriptions concerning the Points of Interest.

The descriptions and the characteristics of the POI make up the content that comes back to the user via a Smartphone or the site Walking About.



The content of the windows where data is inserted is articulated in the following fields:

- ✓ **Active Flag:** *If selected the POI is visible from a Smartphone*
- ✓ **Auto POI:** *if selected, the POI sends an automatic message/signal to its user who's on-the-go at the moment the user comes near a previously signaled place. (whatever the message /signal is, its chosen by the user vis his smartphone)*
- ✓ **Name:** *name of the object (monument, theatre, fountain, park etc...) located and described by the POI (filling out this field is **most important** for the proper operation of the Theme Channel).*
- ✓ **Key Words:** *Useful to search for information and to select maps.*



- ✓ **Extended Summary:** *Contains the detailed description of the POI made up of simple web pages, images and active links via the "Editor html" found in the form to fill out called "POI Editor" or "Editor".*
- ✓ **Other Names:** *used to insert other commonly used names of an object or place of interest. Makes searching easier.*
- ✓ **Last names or Nicknames:** *Of people who have established an event in the indicated place.*
- ✓ **Brief Summary:** *Small summary of the things or events that are pin pointed that is used in the POI's icon bar. This is the same summary that smartphone users will see when they come through the interested area.*
- ✓ **Nation:** *Political location of a place*
- ✓ **Region:** *Political location of a place*
- ✓ **Location:** *Name of the area in who the POI is found.*
- ✓ **Length of Event:** *Date and time in which the event took place*
- ✓ **Subject Period:** *Date or period in which the events took place*
- ✓ **Source:** *References or publications that back up the subject.*
- ✓ **Website:** *Website's internet address*
- ✓ **Correlated POI:** *Similar POI on the map that talk about the same subject but with a different perspective.*
- ✓ **Older and Next POI:** *those POI on the map that are directly correlated to the one in question that take the same train of thought: physically, temporarily and cognitively.*
- ✓ **Icon:** *You can add icons to the POI that can help you differentiate it from other POI on the map. Icons are limited in order to avoid a certain level of confusion. These can be chosen using conceptual proximity, similarity. In any case if there is a subject that is not being represented by any available icon it is always possible to insert new ones in the system.*

4.3.2. Positioning POI

The button "Position POI" is used to modify the position of an already existing POI

By hitting the button you create a map that contains a fictitious POI (green) that signals the position where the POI you wish to move is found.

Next, in the "address" box you under the map you insert the name, address or destination of the object of interest, and you click "search". A white POI will come appear on the map indicating the destination. Drag the green POI onto the white POI and save the position by clicking on the red label "Save Changes". Having done this the modified old POI will now assume the new position or otherwise don't save the changes and the POI will return to its original position.

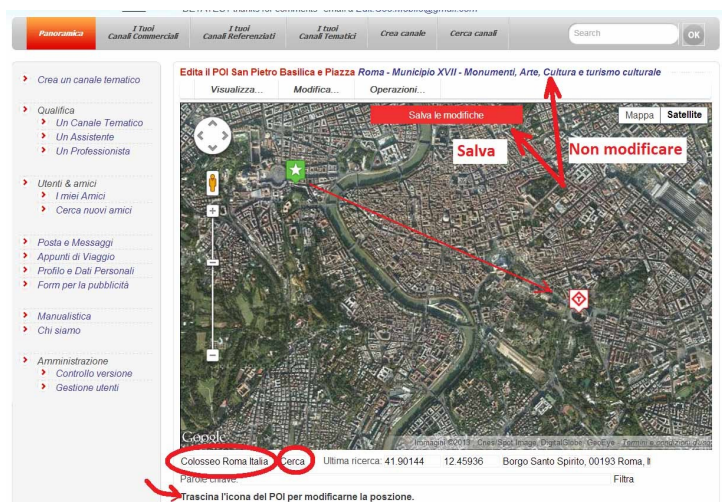


Edit.Geo.Mobile

“ Walking About TM ” User Guide for PC online

1° March
2013

The **fictitious** POI can be moved manually by dragging it to the preferred destination and by clicking on the red label "Save Changes" as explained above.





Edit.Geo.Mobile

“ Walking About TM ” User Guide for PC online

1° March
2013

4.3.3. Attaching onto POI

Upload images and sounds that you want to add to your POI and see on your smartphone or personal computer onto the multimedia gallery.

Click on "Choose File" and select the file in acceptable format and save in the gallery (hit Save Changes).

Next choose from the picture files the image you would like to see as the POI cover, and again hit "Save Changes"

Copyright © 2012 EDIT.GEO.MOBILE S.r.l. All Rights Reserved ©
Via Timavo 34 - 00195 Roma - Edit.Geo.Mobile@gmail.com - P. Iva. 10732951008
Free web templates presented by QARTIN



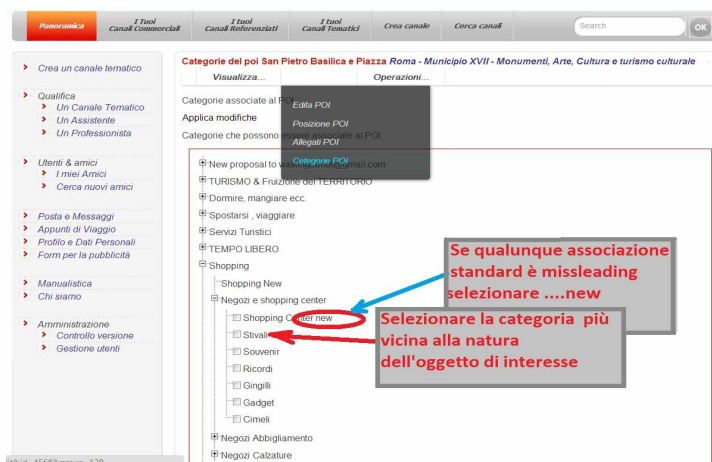
Edit.Geo.Mobile

“ Walking About™ ” User Guide for PC online

1° March
2013

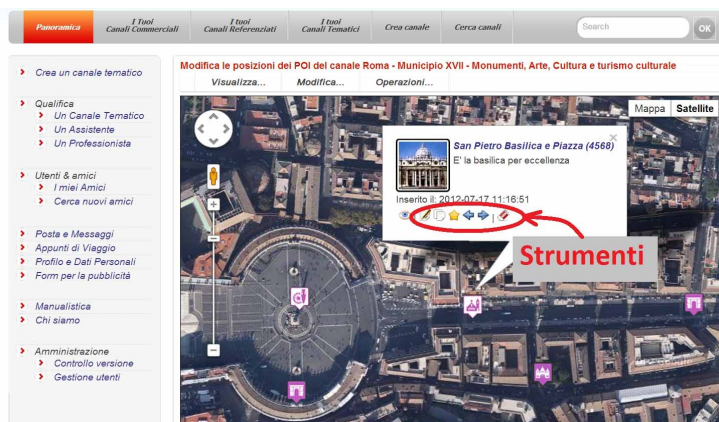
4.3.4. Categorizing POI

A POI can be classified by associating a set of words to it that logically make sense. Classifying it allows for a smoother search using the search engine WA.



4.4. Modifying POI

The command buttons available to modify a POI are found in the icon bar bubble associated with the POI. Usage is analog and is described in the section titled New POI.



In order to operate under the "Editor" function select the Icon with the Pencil. The icon is visible in the POI's lower icon bar, but only for the users that have editing privileges.

In order to operate under the "Editor" function select the Icon with the Pencil.

The icon is visible in the POI's lower icon bar, but only for the users that have editing privileges.





Edit.Geo.Mobile

“ Walking About [™] ”
User Guide for PC online

1° March
2013