



Edit.
Geo.Mobile

“Walking About™”

User Guide for Smart Phone

4° March
2013

CONTENTS

Appendix

a.1 Login

a.2 Settings



Edit.
Geo.Mobile

"Walking About™" User Guide for Smart Phone

4° March
2013

1. Installation

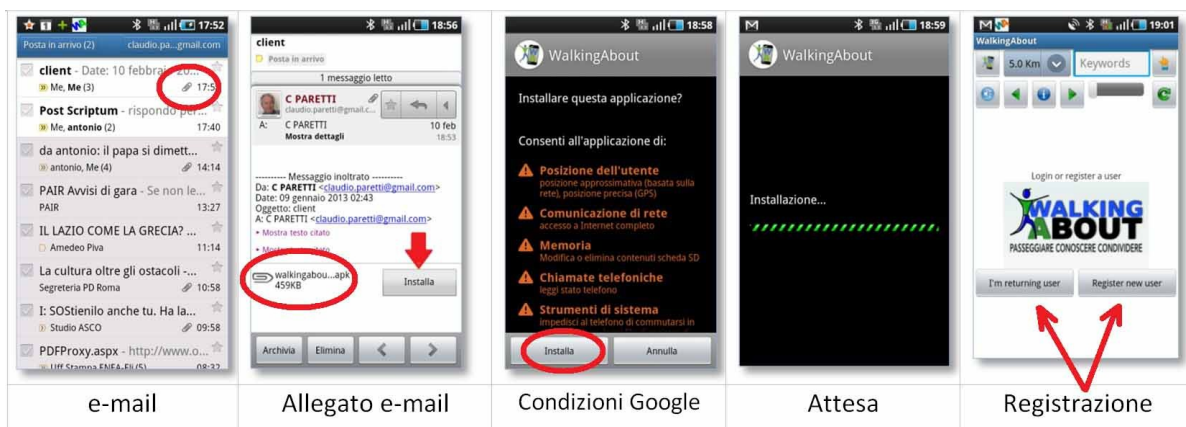
The ClientApp Walking About for Smartphone can be downloaded from Google Play Store, Apple Store, or from the site www.walkingabout.info. The visuals on this guide refer to the app version designed for Android phones.

1.1. Downloading the App "Walking About"

If the app was downloaded directly from the AppStore or if it came as a link attached to an email, you need only click on the link to start the download. The download is completed when you reach the Google terms of agreement page.

Accepting the terms of agreement activates the installation of the client app.

Once the installation is complete, the "Walking About" page appears with a clickable button that takes you into the app's Homepage (picture below).



1.2. Downloading the app "Walking About from a PC

In case the app is downloaded from another source (such as the website www.walkingabout.info /download or from a usb key), it will be initially saved in the PC's download folder and can be transferred onto a smartphone via the cable that links it to the PC or by e-mailing the app to the smartphone.

Once you have access to the file "walkingabout.apk" on your smartphone, clicking on it will start the auto installation process that will end with the appearance of the "walking "about homepage as indicated in paragraph 1.1.



Edit.
Geo.Mobile

“Walking About™”

User Guide for Smart Phone

4° March
2013

2. Registration

The Walking About mobile app allows users to subscribe to the Walking About social network, to take advantage of informative material found in the topic specific communication channels, and to create and expand ones own content.

By clicking the button indicated by the red arrow below in figure 2a, a menu 2b will open that must be populated with name, last name, active email address and password in order to start the registration process. (Registration must then be confirmed via an e-mail sent to the address provided) Once the registration is confirmed, by clicking accept you will be taken to the client's homepage, figure 3c.

<p>A rosso indica in attesa di login</p>		
2.a Registrazione e/o accesso a WA	2.b Registrazione	2.c Homepage WA

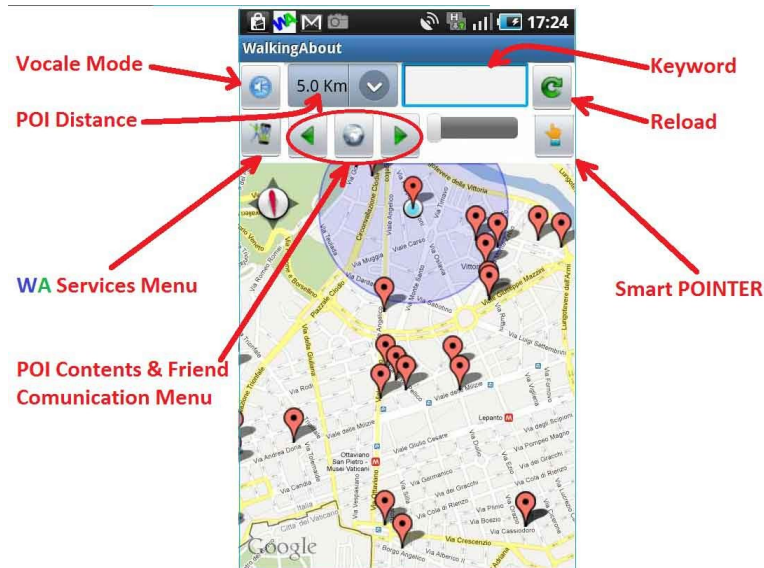


Edit.
Geo.Mobile

“Walking About™” User Guide for Smart Phone

4° March
2013

3. Homepage Walking About Mobile



The client app is made up of:

- 3 commands to set up user mode
 - ✓ Voice and visual mode (The app is configured to show you voice memos as a list within the POI)
 - ✓ A setting that lets you set the maximum distance allowed in order for a POI to be considered doable.
 - ✓ The Reload button and the keyword box that lets you search for specific POI.
- The access menu for Walking About services.
 - ✓ Here you can upload images and comments directly onto the maps
 - ✓ Activate the GPS "drive to" in order to get to your chosen POI.
- Access menu to the contents within the POI and your communication with friends.

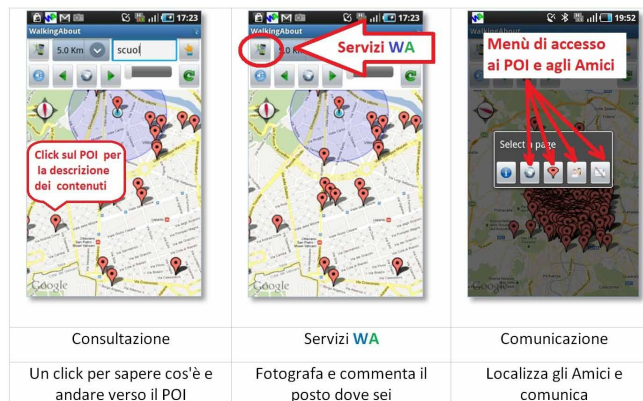


Edit.
Geo.Mobile

“Walking About™”

User Guide for Smart Phone

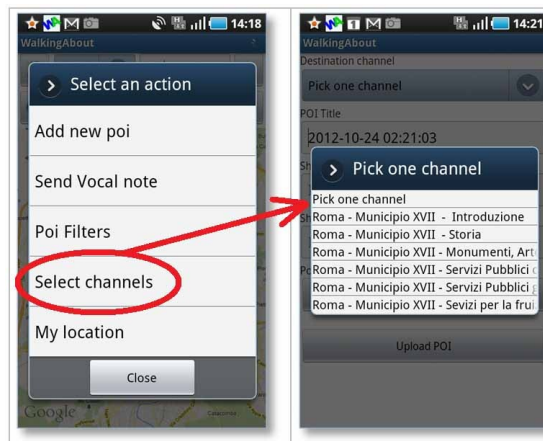
4° March
2013



- Use the fast choice command (Smart POINTER) in order to see what an object is or who a person is if it's already been memorized by the system (refer to point 6).

4. Personalizing Content

The content available via the application Walking About can be personalized in order to meet the needs of the user. The goal is to select the Theme Channels of interest at the moment where and when the user finds himself. This comes about by indicating those Theme Channels as the users favorites. (NOTE: The channels that make up the favorites library offered by Walking About would have been chosen previously from a browser (see also User Guide Walking About for PC)



5. Guide to resources found in proximity

One of the uses for the application Walking About is the guide to resources found where one is standing or in proximity. To do this one can use two types of visuals, a

5

Edit.Geo.Mobile s.r.l.
Via Timavo 34
00195 Roma
P.IVA/CF 10732951008

Fax 06 3700 175
Email
info@editgeomobile.com
Mobile 329.9713.998
www.editgeomobile.com



Edit.
Geo.Mobile

“Walking About™” User Guide for Smart Phone

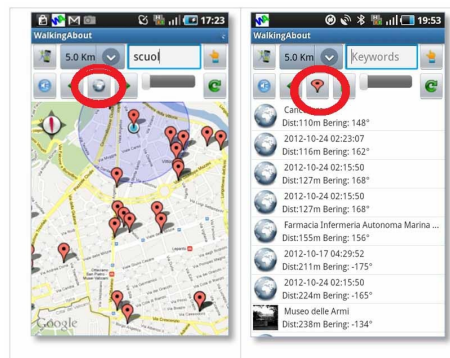
4° March
2013

themed map or a list in order of distance from the user, alternating back and forth depending on need.

The guide to resources found in proximity answer the following questions.

5.1. "What's here to explore" - familiarizing yourself with the area

A user can identify points of interest nearby in the area by using the map or the list of POI sorted by distance. Both representations give the user a complete view of the area that will arm him with enough information to think through where and what to visit



You can see that the list of POI lets you browse in a quick manner the content of the graphic view of places of interest present on the map. In fact instead of exploring POI by POI, you can run down the lengthiest list of names and pictures of POI.

5.2. "Diving In" - Reading the multimedia content of a POI

Content within a POI can be read directly from the map by clicking on the POI or clicking on a specific POI on the list.

By clicking on a POI either from thump or from the list you will access content according to the sequence shown below:

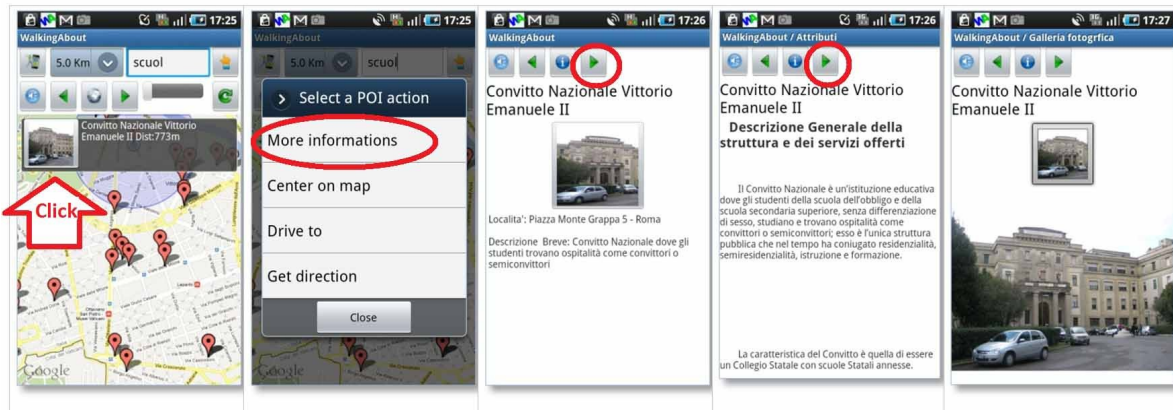


Edit.
Geo.Mobile

“Walking About™”

User Guide for Smart Phone

4° March
2013



5.3. "Where is it?..." Searching for a specific place/object

You can do this by populating the search field and clicking on the button, "activate new search" NOTE: All POI that contain the searched word in the name, brief description or summary will appear in the search results. ex: where is "colosseum"?, where is "school"?



5.4. "Which way is it...? Is it far?" - Orienting yourself

In the POI tag you can also find the distance and direction in which the object place or person of interest is located by pointing the smartphone like a compass until it finds the coordinates. That's the way to follow.



Edit.
Geo.Mobile

“Walking About™” User Guide for Smart Phone

4° March
2013



6. Turning on the navigator

After choosing a POI, you can immediately turn on the navigator without having to insert address's or coordinates following the sequence shown below



7. Walking About Freely

7.1. "Go" Reaching a desired point of Interest

Having chosen a POI to explore you can turn on the function GO. The phone acts like a compass and vibrates when its pointed toward the right direction.



Edit.
Geo.Mobile

“Walking About™” User Guide for Smart Phone

4° March
2013



From the moment the command GO is set the phone will only vibrate if it is pointed in the direction of the physical location of the POI.

Any road chosen will get you to the POI regardless of roadblocks or empty lots or walking zone only. The user can check his way and distance from by continuously pointing the phone towards the POI without actually having to follow a specific route.

Once the POI is reached the phone will send a signal to the user and will show any information available associated with the POI

The POI can be linked to each other to create paths or trails, in this case the Walking About guide will activate immediately towards the next POI.

The guide Walking About thus follows a route that goes from one POI to another in a preset trail by the user that is an Editor of his own Theme Channel.

NOTE: *By putting the phone on Go mode in your pocket, you can find your way with ones bodily turning about until one feels the vibration that signals the correct way towards the POI. If one deviates from the true direction all you have to do is turn about again until you feel the vibration that puts you on the correct path once more.*

7.2. "POI Alert" - The signaling of aPOI when you are near

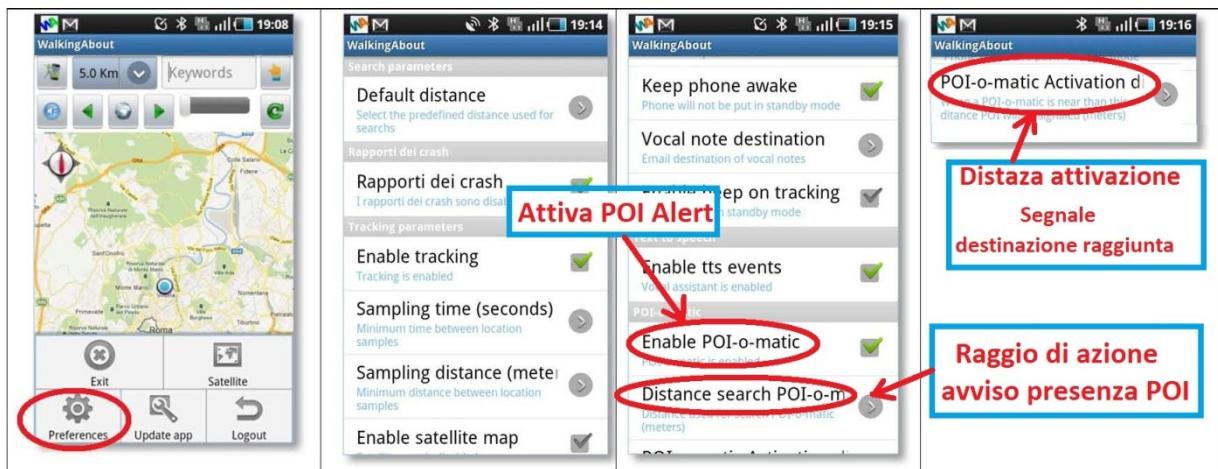
To use the automatic signaling system, activate the service as shown below and set the maximum distance in which the POI must be signaled.



Edit.
Geo.Mobile

“Walking About™” User Guide for Smart Phone

4° March
2013



7.3. "What is it, who is it?" - Informing yourself when you come across something

If on your way you find yourself interested in knowing about a monument, a business, or an object or person and it has been signaled as a POI in a Theme Channel previously chosen by the user, the system will give you the information quenching the users curiosity.



8. Asking and Communicating

8.1. Choosing a friend to chat with

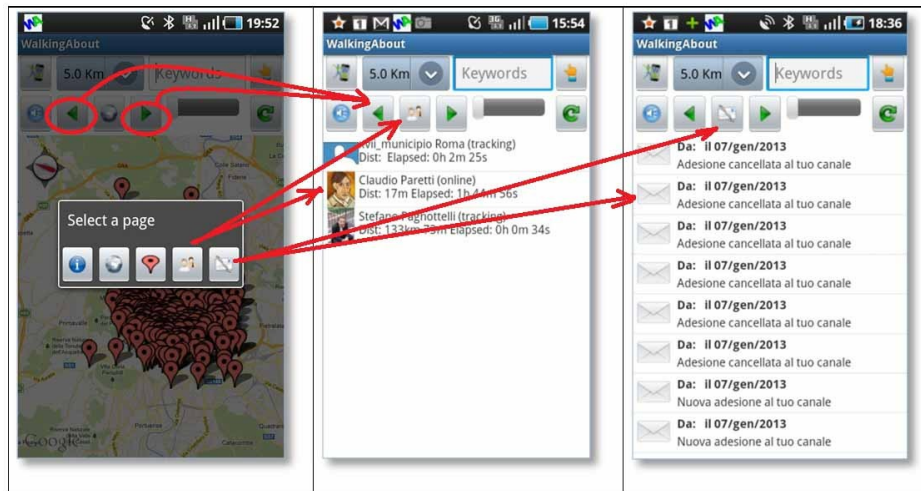
Choose a friend from those listed. Friends listed can be found either on the actual field or online sitting at home at their PC.



Edit.
Geo.Mobile

“Walking About™” User Guide for Smart Phone

4° March
2013



8.2. List of friends

This list contains names of people included in your friends list that are connected to the site Walking About and that are available whether from their computer or from their smartphone as they're walking about exploring

8.3. Managing messages from friends and ThemeChannel users

Contains messages sent and received from your Walking About friends or from users whom you've befriended that are part of the same Theme Channels as you.

This messaging service is very useful when working with groups in motion especially when some members temporarily go out of reach



9. Menu of Services Walking About

9.1. Add a new POI

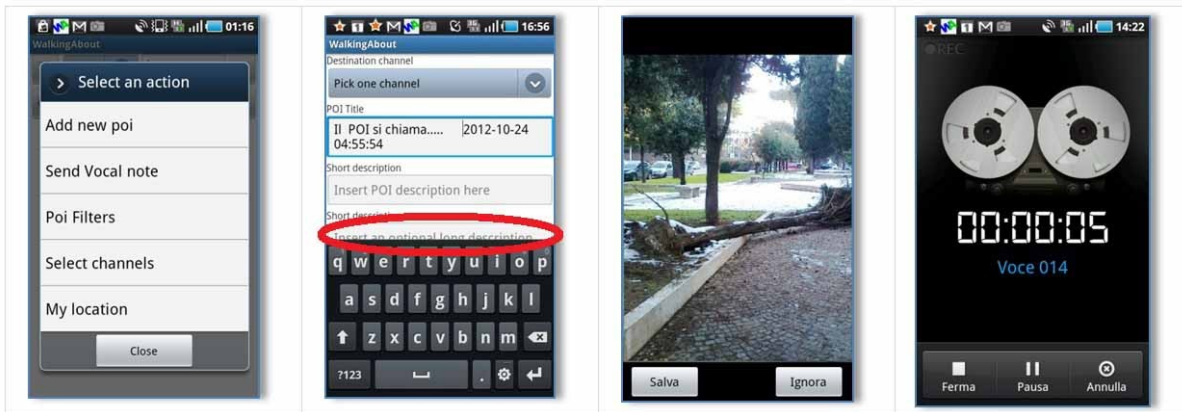
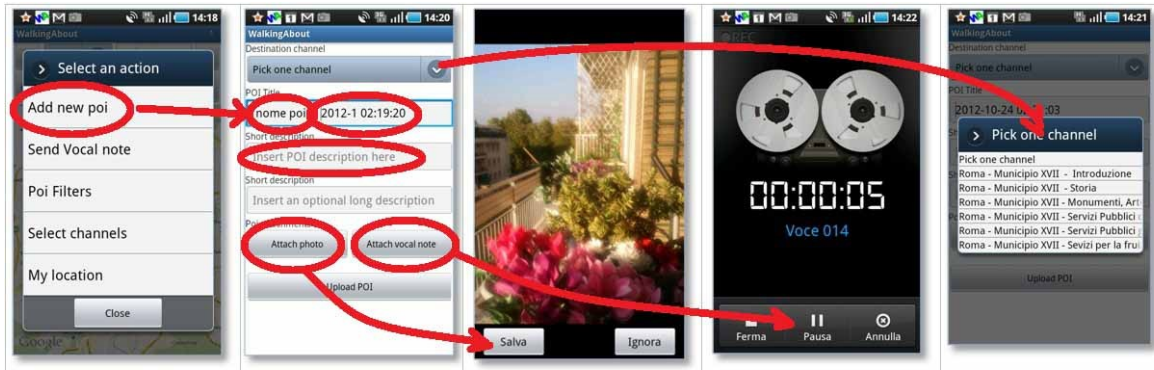
This function allows you to add a new POI onto the map of the Theme Channel and edit and link a POI by name, date, brief description, picture and comments in order to make it available real time to any user found anywhere in the world.



Edit.
Geo.Mobile

“Walking About™” User Guide for Smart Phone

4° March
2013





Edit.
Geo.Mobile

“Walking About™”

User Guide for Smart Phone

4° March
2013

9.2. Sending a voice memo



This function allows you to send your coordinates with a quick e-mail or voice memo to one or more assistants or friends in case of an emergency or simply for oneself in order to record comments on a place or event

NOTE: This function is very useful when managing a group in motion because it:

- allows multi-recipient mail
- message is received by members that are momentarily offline.

9.3. Filtering POIs

(in activation phase)

This is a smart function that allows you to automatically choose POI depending on the interest one has at the moment in relation to where he/she is exploring. This cancels the user having to go manually select Theme Channels that reference the area.



Edit.
Geo.Mobile

“Walking About™” User Guide for Smart Phone

4° March
2013

APPENDIX

a.1.Login (returnig user)

The function "I'm a returning user" is where the user will go in order to enter the site and access content after having logged off or gone offline.



a.2.Settings

Use the menu found on the lower part of the homepage to:

14

Edit.Geo.Mobile s.r.l.
Via Timavo 34
00195 Roma
P.IVA/CF 10732951008

Fax 06 3700 175
Email
info@editgeomobile.com
Mobile 329.9713.998
www.editgeomobile.com

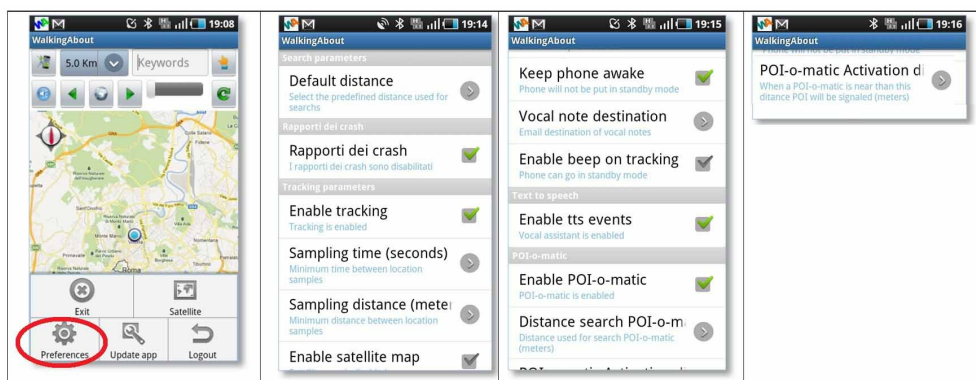


Edit.
Geo.Mobile

“Walking About™” User Guide for Smart Phone

4° March
2013

- Exit the application Walking About from your smartphone. By exiting you can conclude your current session or refresh the system in case of a bad internet connection or a bug in a POI.
- The preferences menu of the application shown in the picture below also briefly described in the next paragraph.



a.2.1. Default Distance: range of minimum distance preset by the user in the search that will filter out the POI that fall within this distance between the smartphone and this radius

Note: the radius of the search can be temporarily modified using the down menu on the upper part of the homepage.

a.2.2. Enable Tracking: Activates and deactivates the user's location and the tracking of the path the user has taken as well as the frequency that one wants to use in order to mark one's position as they go along that would appear in the site Walking About. Refer to the button "Diary" (in the user manual for the website Walking About).

a.2.3. Sample Time: This is the time interval, in seconds, among the sampling that let the user track their path.

a.2.4. Sample Distance: This is the minimum distance to set in meters between two points so that a sampling may be registered. Movement will be memorized only if this set distance is exceeded.

a.2.5. Enable Satellite Map: Choose whether you want to see data as a map or as satellite images.

15

Edit.Geo.Mobile s.r.l.
Via Timavo 34
00195 Roma
P.IVA/CF 10732951008

Fax 06 3700 175
Email
info@editgeomobile.com
Mobile 329.9713.998
www.editgeomobile.com



Edit.
Geo.Mobile

“Walking About™”

User Guide for Smart Phone

4° March
2013

Note: You can alternate back and forth by clicking on the "satellite" button on the homepage.

- a.2.6. Keep Phone Awake:** Allows you to keep your phone in full function even while running the Walking About app. At the end of a telephone call the system will return to where it left off.
- a.2.7. Vocal Note Destination:** In this area you can store addresses for your voice memos.
- a.2.8. Enable beep on tracking:** Audible feedback that if activated, signals the moment of a place that has been marked. Signals the activity of the data logger allowing one to work hands free.
- a.2.9. Enable TTS Events:** Enables the audio guide and voice messaging system.
- a.2.10. Enable POI-o-matic:** Activates the signaling of a POI when one is near. Allows the POI to become an active participant in ones path. The POI is signaled when the distance from the POI is less than the "Automatic Distance" set.
- a.2.11. Distance Search POI-o-matic:** Range in which points of interest are searched automatically.
- a.2.12. POI-o-matic activation distance:** Distance in meters between a user and its object of interest in which a POI is automatically activated. It indicates and describes the content of a POI verbally and visually.